

# Governors' Newsletter

## Spring 2008

### Introduction and Message from the Chairman

Hello and welcome to the second *Governor Newsletter to Parents*. As is fitting in these times of information communication technology this letter comes to you from the School Website for at least two reasons. Firstly to show that even as governors we have embraced change and moved into the technological era and secondly and more importantly, we save a lot of money by not sending it out in paper form thus directing our budget to more useful areas. We initially decided to issue a letter twice yearly but it is now two years since the last letter, how time flies. In this issue we are including some key information on:

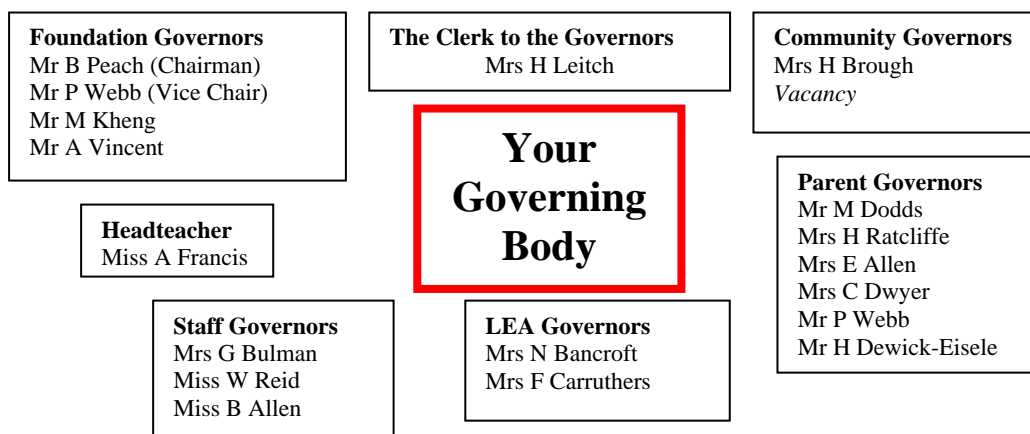
- ❑ What a school governor actually does
- ❑ The financial position
- ❑ Premises
- ❑ Governors' involvement in the Ofsted inspection
- ❑ Specialist school management group
- ❑ Examination performance

As with our last letter, we welcome any feedback and any ideas as to what you would like to see in such a letter.

### What a school governor actually does

We attend a full Governors' meeting once every term held on a Wednesday evening starting at 7.00 pm. These meetings look at items such as self-evaluation, setting school priorities/targets and longer-term strategic intents. New policies are formulated and old ones are reviewed and updated. There is always a full report from the Headteacher. Those standing on the Finance committee again meet once a term on a Thursday at 7.00 pm prior to the full meeting so we can report back. Some Governors are involved with the Specialist School Management Group (see topic later). The Admissions panel look at primary school pupils who score just below the 11+ standard but are recommended by their Headteachers for possible inclusion at the school. All governors are linked to a subject and have meetings with their respective subject leaders throughout the year. Governors are involved in other ways such as trips, providing talks and demonstrations and generally supporting whole school events.

### Governor Structure



## **The Financial Position**

(by Kitty Hamilton)

The financial situation of the school remains quite tight, but we are within budget. Finance meetings are held approximately six times a year and inform budget setting and medium and long term planning priorities, as well as comparing budget and actual spend each month. The business and enterprise specialist status and the new training school status each bring in £60,000 annually, which really helps extend the opportunities we can provide. Currently our main capital investment project is the refurbishment of the old school house, which will greatly improve the main entrance to the school and the facilities available for staff and administration. An improved hall and more sports facilities are on our wish list, but at present there is no funding in the pipeline for this.

## **Premises**

For the last year the school has been attempting to update and improve the current reception/administration/headteacher's offices as we now have the old head's house back for use by the school. Plans have been drawn up and submitted but as is the norm with Listed Buildings there are continual setbacks. This year Norbury House has been fitted with a new ICT suite and the Pavilion has been completely refurbished and now includes new gym equipment. A rolling maintenance plan has included fitting anti-glare windows to the language area, tree and ground maintenance and painting of one third of the school.

## **Governors involvement in the Ofsted inspection**

(Report by Patrick Webb)

As you may well know the school was subject to an Ofsted inspection in March last year. I was asked to represent the Governing Body to the Inspectors. I was most intrigued to know what I would be asked by the Inspectors and they started off by questioning me on the input the Governors make to ensure that they are both knowledgeable and questioning of the way the school is run. They asked what I had observed about the way the pupils appear when I was visiting. I replied that on all visits I had been impressed by the concern that the pupils had shown to represent the school in a good light and also how they grow in confidence throughout each year at the school. It was then that the lead inspector said that they had noted a really impressive feature of the school and unlike many schools they had visited, they really felt that the young people had developed a maturity both personal and of purpose. It was evident that the pupils, especially the Senior Prefect Team had contributed in an extremely positive and valuable way to making the inspection such a success. You will know that the school was not only given a clean bill of health but has been awarded the rare and highly sort after accolade – 'Outstanding'. As a parent, this is great news, as a member of staff it must come as a huge source of pride, and as a Governor it feels like a well deserved and fitting tribute to the hard work going on in the school and it merits the faith people have in this grammar school which is led by a quality team of professionals.

## Specialist School Management Group

As you will know the school now has two specialisms - Business and Enterprise and Training with an emphasis on Student Voice. The Specialist School Management Group is the steering group and the main thrust for the direction of ideas and innovation. The group consists of teachers, support staff, governors and representatives from local industry. The main focus groups are:

- E-Learning Environment and use of pod casts
- Assessment for Learning
- Eco-Schools
- Outreach Work
- Enhancing Teacher Training

These groups are in their infancy at the moment but already excellent ideas are being worked on and include the schools' commitment to Extended School Services whereby we encourage community access to the school and its facilities.

## Examination Performance compared with local Grammar Schools

	<i>%5A* - C</i>	<i>%5A* - C Inc. Maths and English</i>	<i>CVA KS2 - 4 2002 - 2007</i>
QEGS Alford	99	97	1017.5
QEGS Horncastle	98	97	999.8
KEVIS Louth	97	95	993.9
Skegness Grammar	92	89	1020

<i>%5A* - C</i>	<i>2004</i>	<i>2005</i>	<i>2006</i>	<i>2007</i>
QEGS Alford	99	99	100	99
QEGS Horncastle	97	98	98	98
KEVIS Louth	97	95	97	97
Skegness Grammar	98	94	98	92